

# An Integrated System for Regional Environmental Monitoring and Management Based on Internet of Things

Shifeng Fang, Li Da Xu, *Senior Member, IEEE*, Yunqiang Zhu, Jiaerheng Ahati, Huan Pei, Jianwu Yan, and Zhihui Liu

**Abstract**—Climate change and environmental monitoring and management have received much attention recently, and an integrated information system (IIS) is considered highly valuable. This paper introduces a novel IIS that combines Internet of Things (IoT), Cloud Computing, Geoinformatics [remote sensing (RS), geographical information system (GIS), and global positioning system (GPS)], and e-Science for environmental monitoring and management, with a case study on regional climate change and its ecological effects. Multi-sensors and web services were used to collect data and other information for the perception layer; both public networks and private networks were used to access and transport mass data and other information in the network layer. The key technologies and tools include real-time operational database (RODB); extraction–transformation–loading (ETL); on-line analytical processing (OLAP) and relational OLAP (ROLAP); naming, addressing, and profile server (NAPS); application gateway (AG); application software for different platforms and tasks (APPS); IoT application infrastructure (IoT-AI); GIS and e-Science platforms; and representational state transfer/Java database connectivity (RESTful/JDBC). Application Program Interfaces (APIs) were implemented in the middleware layer of the IIS. The application layer provides the functions of storing, organizing, processing, and sharing of data and other information, as well as the functions of applications in environmental monitoring and management. The results from the case study show that there is a visible increasing trend of the air temperature in Xinjiang over the last 50 years

(1962–2011) and an apparent increasing trend of the precipitation since the early 1980s. Furthermore, from the correlation between ecological indicators [gross primary production (GPP), net primary production (NPP), and leaf area index (LAI)] and meteorological elements (air temperature and precipitation), water resource availability is the decisive factor with regard to the terrestrial ecosystem in the area. The study shows that the research work is greatly benefited from such an IIS, not only in data collection supported by IoT, but also in Web services and applications based on cloud computing and e-Science platforms, and the effectiveness of monitoring processes and decision-making can be obviously improved. This paper provides a prototype IIS for environmental monitoring and management, and it also provides a new paradigm for the future research and practice; especially in the era of big data and IoT.

**Index Terms**—Big data, climate change, cloud computing, enterprise systems, environmental monitoring and management, e-Science, geoinformatics, industrial informatics, Internet of Things (IoT), system integration.

## I. INTRODUCTION

**E**NVIRONMENTAL issues such as climate change have received much attention in recent years, and environmental monitoring, modeling, and management enable us to gain a deeper understanding of natural environmental processes. Environmental monitoring and management is a broad area focusing on using scientific and engineering principles to improve environmental conditions. How to effectively monitor, model, and manage environmental processes is a critical task for both scientists and engineers.

Environmental informatics has experienced a very rapid development and wide application in monitoring, modeling, and managing environmental processes in the past decade. Environmental informatics involves specific environmental problems related to the applications of computer science and systems engineering techniques, management information system (MIS), and environmental information system (EIS), which were designed to collect, process, and exchange data and information since the 1980s. Automatic data acquisition has been accelerated by a variety of technologies, such as remote sensing (RS), geographical information system (GIS), global positioning system (GPS), and so on. From the 2000s, the proliferation of automatic data acquisition technologies, such as radio frequency identification (RFID) and sensor technologies, was introduced to create decision support systems (DSSs) and integrated environmental information systems (IEISs), and also brought new vitality to environmental monitoring and management.

Manuscript received October 06, 2013; revised December 13, 2013 and January 20, 2014; accepted January 21, 2014. Date of publication January 27, 2014; date of current version May 02, 2014. This work was supported in part by the Key Project for the Strategic Science Plan in Institute of Geographic Sciences and Natural Resources Research (IGSNRR), Chinese Academy of Sciences (CAS) under Grant 2012ZD010; in part by the Research Plan of the State Key Laboratory of Resources and Environmental Information Systems (LREIS), CAS under Grant O88RA900PA; in part by the National Natural Science Foundation of China under Grant 41201097, Grant 41371381, and Grant 71132008; in part by the U.S. National Science Foundation under Grant SES-1318470 and Grant 1044845; and in part by the Youth Science Funds of LREIS, IGSNRR, CAS. Paper no. TII-13-0774. (*Corresponding authors: S. Fang and L. D. Xu.*)

S. Fang, Y. Zhu, and J. Yan are with LREIS, IGSNRR, CAS, Beijing 100101, China (e-mail: fsfn01@163.com; zhuyq@igsnr.ac.cn; yanjw2001@163.com).

L. D. Xu is with the Institute of Computing Technology, Chinese Academy of Sciences, Beijing 100080, China; with Shanghai Jiao Tong University, Shanghai 200240, China; with the University of Science and Technology of China, Hefei 230026, China; and also with Old Dominion University, Norfolk, VA 23529, USA (e-mail: lxu@odu.edu).

S. Fang and J. Ahati are with the Xinjiang Academy of Environmental Protection Science, Urumqi 830011, China (e-mail: jiaeh@sina.com).

H. Pei is with the College of Information Science and Engineering, Yanshan University, Qinhuangdao 066004, China (e-mail: 1982197950@163.com).

Z. Liu is with the College of Resources and Environment Science, Oasis Ecology Key Laboratory of the Ministry of Education and Xinjiang Uygur Autonomous Region, Xinjiang University, Urumqi 830046, China (e-mail: lzh@xju.edu.cn).

Color versions of one or more of the figures in this paper are available online at <http://ieeexplore.ieee.org>.

Digital Object Identifier 10.1109/TII.2014.2302638

The rapid development and wide application of environmental informatics has significantly improved environmental monitoring, management efficiency, and effectiveness. However, both the DSSs and enterprise information systems (EISs) (or IEISs) were implemented to help locate and analyze environmental problems rather than to solve any environmental problems in reality. In the last decade, the Internet of Things (IoT), a concept describing how the Internet extends into people's everyday lives through a wireless network of uniquely identifiable objects [1], is predicted to be able to promote the entire process of environmental monitoring, modeling, and management, as well as to support sustainable decision-making. This paper focuses on the IoT application in the new generation of environmental informatics, and provides a new paradigm for environmental monitoring and management in the future.

## II. RELATED WORK

Integrated environmental monitoring and management based on IoT is an enduring and active topic, not only for the scientists and engineers, but also for the public and the administrators, and it covers broad issues and involves many technologies in the computer and information sciences. In this section, existing environmental monitoring and management issues are discussed with a focus on environmental informatics, corresponding EISs [2], and integrated information systems (IIS), as well as IoT, are also reviewed to clarify the essence of this work.

### A. Environmental Informatics

Environmental informatics is an interdisciplinary field involving environmental science, computer science, information science, and industrial information integration engineering (IIIE). It formally started developing in the early 1990s in Europe to integrate and coordinate various informatics technologies and facilitate decision-making to intimately link the territory knowledge with expected social, economic, ecological, and environmental objectives [4], and it can help handle various kinds of environmental problems with more cost-effective and forward-looking solutions.

The spectrum of environmental informatics can be classified into five categories: 1) database system (DBS) [3]; 2) GIS; 3) DSS [4]; 4) expert system (ES); and 5) IEIS [5]. In China, Professor Jiulin Sun (academician of the Chinese Academic of Engineering) leads the development of Res-informatics, with topics on mechanism of resources information, development and application of Geoinformatics, information integration, information sharing, ES, data bank, visualization, modeling of resource environment, and establishment of simulated research environment of resource sciences [6], [7]. From the late 2000s, IoT represents how the Internet extends into people's everyday lives through a wireless network of uniquely identifiable objects [5] and it is predicted that IoT will promote the entire process of environmental monitoring and management in the near future. However, challenges remain in the proper handling of "Big Data" [8] in both scientific and industrial areas, which need effective mechanisms for the acquisition, processing, transmission, storing, and management of massive data and information, and new paradigm of integrated EIS is expected to provide good solutions for them.

### B. Integrated Information System

A specific kind of EIS (i.e., DBS, GIS, DSS, and ES) in general has its own merits and limitations. DBS is the basic component of various EISs, but it is limited to spatial analysis and decision-making. The strength of GIS lies in spatial analysis and information visualization, but it falls short of data management and utility modeling. DSSs usually excel in extracting relational knowledge from multidimensional data comparison and organizing the interactions among users and models, but they are vulnerable to decision-makers' experiences and preference [1]. ESs are excellent in knowledge management but almost all of them are limited in knowledge acquisition.

Fortunately, IISs, which involve multiple types of technologies and tools of information and computer sciences, provide a good solution to the complex tasks in environmental monitoring and management. IIS is an array of multiple information sets linked together in an organized way [9], [10]. IISs and tools have been widely used in practicing environmental monitoring and management including ecosystem assessment and resources management. The core technologies of IIS and typical application cases have been discussed in literature [11]–[13]. Studies on environmental sustainability incorporating the information systems have been initiated for improving environmental and economic performance [14]. There are numerous studies on the applications of IISs in different areas within the framework of IIIE [15], [16], which is a set of foundational concepts and techniques that facilitate the industrial information integration process and comprise methods for solving complex problems when developing IISs [17], [18]. The applications of IIIE have covered areas such as business analytics [19], supply chain management [20], [21], resources and environment management [22], public health service [23], [24], integrated medical supply systems [25], knowledge management, and ERP in enterprise management [26], automated assembly planning system [27]–[29], service workflow management [30]–[33], and human-machine system design [34]. Furthermore, Web services and integrated models were used to create accessible interfaces and manage the integrated data sets in IISs [35].

### C. Internet of Things

The IoT refers to uniquely identifiable objects and their virtual representations in an Internet-like structure [36]. The term "Internet of Things" was first used by Kevin Ashton in 1999 [37], and became popular through the Auto-ID Center and related market analysis publications [38]. RFID tags, sensors, actuators, and mobile phones are often seen as prerequisites for the IoT [39]. Key technologies of IoT include RFID technology, sensor network and detection technology, Internet technology, intelligent computing technology, and so on; however, technical challenges must be tackled before these systems can be widely applied [40].

The concept of IoT has been proposed more than 10 years, and it is not just staying at the concept level but is becoming a reality with the rapid development and wide application of wireless sensor network (WSN) [41] and cloud computing. Ongoing investments and specific work have been initiated to solve challenging research problems, to develop the necessary

hardware and software, and to deploy the infrastructure required [42]. The combination of the Internet and the emerging technologies such as near-field communications, real-time localization, and embedded sensors could help us transform everyday objects into smart objects that can understand and react to their environment [43]. Furthermore, some technologies that have been widely used in resource management and environmental science are technical components of IoTs, such as RS, GIS, GPS, and so on.

In IoT systems, multi-sensor data fusion issues such as node signal processing, WSN localization, anti-collision, and information-aggregation are often formulated as optimization subjects [44]; data fusion of multi-sensor for IoT precise measurement based on improved PSO algorithms have been discussed [45]. The combination of sensors, WiFi, 3G, RFID, near field communication (NFC), and Bluetooth will allow significantly improved measurement and monitoring methods of vital functions of health (temperature, blood pressure, heart rate, cholesterol levels, blood glucose, etc.) [46]. Fueled by the recent adaptation of a variety of enabling wireless technologies such as RFID tags and embedded sensor and actuator nodes, the IoT has stepped out of its infancy and is the next revolutionary technology in transforming the Internet into a fully integrated Future Internet [47]. A naming, addressing, and profile server (NAPS) as a middleware to bridge different platforms in IoTs sensory environments has been presented for widely used standards and protocols [48]. A software framework architecture for mobile devices that aims to facilitate the development process of embedded RFID applications and the integration process of business applications and Electronic Product Code (EPC) Network instances has been introduced to provide a common communication interface to abstract different devices and reading protocols as well as functions to process and distribute data [49].

Application fields of IoT include smart product management, waste management, intelligent shopping, urban planning, continuous care, sustainable urban environment, smart meters, emergency response, smart events, home automation, and so on [50]. IoT technologies can be suitably applied to environmental monitoring applications with the ability of sensing, in a distributed and self-managing fashion, as well as to seamlessly integrate such heterogeneous data into global applications [51], [52]. The IoTs can offer people with disabilities the assistance and support they need to achieve a good quality of life and allow them to participate in the social and economic life [53]. IoT is also used in detailed fields of environmental monitoring and management including underwater resources management [54], wetland monitoring system [55], emergency management community [56], food supply chain [57], urban public safety emergency management early warning system [58], in-home health care devices and services [59], [60], pre-alarm system in mines [61], and planning, construction, and management toward sustainable cities [62].

Furthermore, a number of large-scale initiatives on IoT are active in the US, Europe, Japan, China, Korea, and other countries. There are also many research projects funded by various governments, such as the program on Cyber-Physical Systems in the US, the HYDRA project, the RUNES project, the IoT-A project, and the iCORE project in the European Commission [53].

#### D. Motivations of This Paper

From the previous reviews of related work, there has been much important progress in both the environmental informatics and their applications in environmental monitoring and management, and the development and broad application of a variety of EISs (i.e., DBS, DSS, GIS, ES, and IIS) have effectively improved the efficiency of processes simulation and decision-making in environmental monitoring and management.

However, both the architectures and applications of previous EISs have some apparent shortcomings. First, multisources of data and information are constantly expanding from multi-sensors, such as mobile devices, RS, software logs, cameras, RFID, and WSNs, and therefore, acquisition, processing, and management of big data is a severe challenge in IISs for environmental monitoring and management. Second, the effective association and fusion between IISs and data acquisition is another important topic to be further concerned, which has been rarely studied in the existing literature. Third, how to adapt multidimensional and multi-scale applications under deferent tasks and cloud services is another challenge in the next generation IISs [63].

Accordingly, high-level integrated, smart, and sustainable information systems should be developed for practices in the context of industrial environment and sustainable engineering, and it is obvious that IoT reflects the trends of informatics in the near future. Based on this, a novel IIS for regional environmental monitoring and management based on IoT has been introduced for improving the efficiency of environmental monitoring and management tasks, and the results from case study demonstrate that the IIS based on IoT is valuable and efficient for complex tasks in environmental monitoring and management in big data and cloud services.

### III. SYSTEM ARCHITECTURE

The explosion of information technologies in the last decade has laid the foundation for integrative information architecture of the IIS for environmental monitoring and management, a novel IIS for regional environmental monitoring and management based on the framework of IoT has been developed in this work, and Fig. 1 presents the architecture of this IIS in detail.

The architecture of the IIS for regional environmental monitoring and management based on IoT contains four layers: perception layer, network layer, middleware layer, and application layer.

#### A. Perception Layer

The perception layer is mainly used for collecting data and other information of detailed factors of physical world (targets or tasks) in environmental monitoring and management, usually including real-time datasets, models/methods, knowledge, and others. The real-time data collection based on IoT is related to multi-sensors, including RS platforms (i.e., satellites, balloons, aircrafts, and radar), situ instruments (i.e., situ observation instruments for meteorological, hydrological, and ecological factors), mobile (i.e., 2G, 3G, and LTE), IEEE 802.X (i.e., WiFi, Bluetooth, and ZigBee), RFID, and other sensors. The



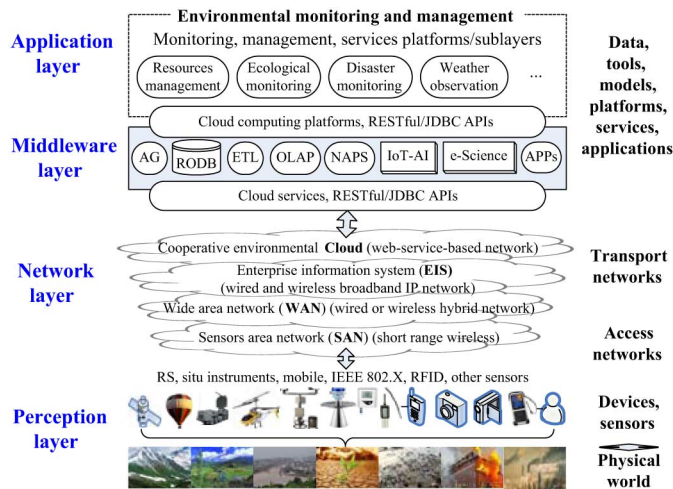


Fig. 1. Overall architecture of the IIS based on IoT.

perception layer makes masses of sensors and devices connected; the core and base of the layer is where the rapid development and wide application of sensor technologies in IoT will occur.

### B. Network Layer

The network layer performs basic functions of data and information transmission as well as the interconnection of systems and platforms. The network layer mainly consists of access networks and transport networks. Access networks are short-range wireless networks, usually consist of Sensors Area Network (SAN), 2G, 3G, WiFi, and ZigBee are common components to support the connection of things (i.e., sensors, devices, and users) in environmental monitoring and management. In transport networks, various Wide Area Networks (WANs) of wired or wireless hybrid network are usually subsystems of EIS with wired and wireless broadband IP network, and EISs could be connected to the cooperative environmental cloud with Web-service-based global network [64]. European Telecommunications Standards Institute (ETSI), Machine to Machine (M2M) services architecture [65], 3rd Generation Partnership Project (3GPP), Machine-Type Communications (MTC) [66], the EPC-global architecture, transport protocols [HyperText Transfer Protocol/Transmission Control Protocol (HTTP/TCP) and Constrained Application Protocol/User Datagram Protocol (CoAP/UDP)], and Internet Protocol version 4/Internet Protocol version 6 (IPv4/IPv6) are common technologies or standards for the transport networks.

### C. Middleware Layer

The middleware layer is a set of sub-layers for the management of data, software/tools, models and platforms, and interposed between the network layer and the application layer. Real-time operational database (RODB) is used for efficiently managing massive data generated by sensors and devices, and it is also used for storing and management of models, knowledge, and other information. Extraction–transformation–loading (ETL) is used to extract, transform, and load the demand information from the RODB in the IIS. Once the needed information is extracted and transformed to the required format,

on-line analytical processing (OLAP) is realized through relational OLAP (ROLAP) and execute operations including slicing, dicing, roll up, drill-down, and pivoting. The NAPS is used to bridge different platforms in IoT sensory environments. Application gateway (AG), application software for different platforms and tasks (APPs), and IoT application infrastructure (IoT-AI) were introduced in the middleware layer for services and applications. Furthermore, GIS is used for temporal analysis of datasets, and e-Science platforms consist of Infrastructure as a Service (IaaS), Data as a Service (DaaS), Platform as a Service (PaaS), and Software as a Service (SaaS), which were used for computing and analysis in the IIS.

The middleware architectures proposed in the IIS based on IoT often follow the service-oriented architecture (SOA) approach, which allows for decomposing complex systems into simpler and well-defined applications and components, with common interfaces and standard protocols. Interactions between components, interfaces, applications, and protocols were implemented by representational state transfer (RESTful) APIs or Java database connectivity (JDBC) APIs.

### D. Application Layer

The application layer of the IIS based on IoT mainly consisted of application support platforms, cloud computing platform, and e-Science platforms. The application layer provides the functions of storing, organizing, processing, and sharing the environment data and other information obtained from sensors, devices, and Web services, as well as the functions of taking professional applications in environmental monitoring and management, such as resources management, pollution monitoring (i.e., solid waste, noise, air quality, etc.) ecological monitoring, disaster monitoring and prediction, weather observation and forecasting, and so on.

The application layer is the top level and represents the final task of IIS for environment decision management and planning service. As the monitoring task is becoming more and more complex and more refined, more data coming from sensors and devices, and more information coming from Web services, processing, and management requires much powerful computational ability than before, and the technology for efficiently processing mass data and scientific models is necessary. Cloud computing that is based on virtualization technique and using networks as the carrier has merits of high reliability, extensibility, and flexibility, thus providing a new technology for data processing and computation in the IIS, and it can integrate extensible data processing, information storage, and other distributed resources to make them work together.

## IV. CASE STUDY

IISs based on IoT has broad prospects in both scientific and industrial areas, as IISs are not only good solutions but also integrated platforms for complex tasks, and the features of IoT are exactly suitable for data collection and processing in the perception layer of IISs. Among the application fields where IISs and IoT solutions can provide competitive advantages and play important roles, environmental monitoring and management would be one of the most representative areas. This paper focuses

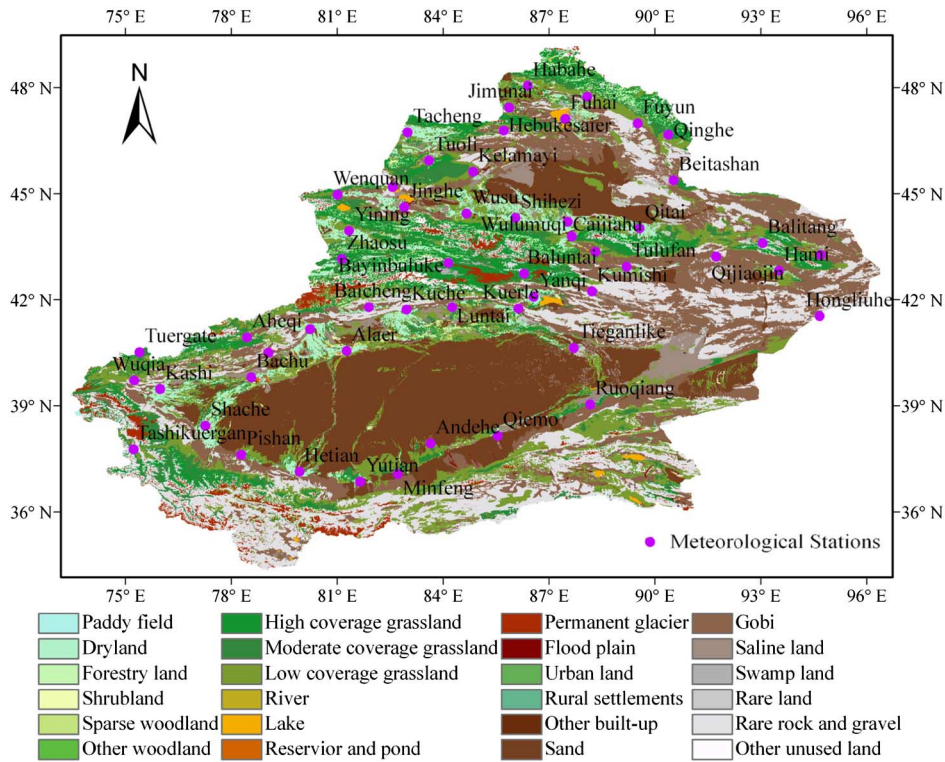


Fig. 2. Study area with land use types and meteorological stations distribution.

on the integration of key technologies from both IIS and IoT in typical environmental monitoring and management task, taking the regional climate change (i.e., air temperature and precipitation) and its ecological responses [i.e., gross primary production (GPP), net primary production (NPP), and leaf area index (LAI)] as an example, providing a paradigm for research in environmental sciences.

#### A. Study Area

The paper focuses on Xinjiang, which is located in the northwest of China and the center of Eurasia, as the typical study area (Fig. 2). Being far from the sea, and with alpine surrounds, it belongs to one of the typical arid and semi-arid areas in the world. The natural environment in this region is vulnerable and sensitive to climate change and human activities, and the temporal and spatial evidence of climate change over the past decades and its ecological responses has been discussed in existing literature [67]. Water resources and climatic conditions are decisive factors for restricting the sustainable development in Xinjiang [68], so understanding the intensity of climate change and its ecological responses is very important for the regional sustainable development in the area.

#### B. Data Collection

In order to analyze and present the climate change and its ecological responses in the study area, multisources datasets were collected from sensors and Web services under the framework of IIS based on IoT, which include: 1) 50 years (1962–2011) of hourly observational data of meteorological elements (i.e., air temperature and precipitation) from situ instruments and sensors distributed in the study area; 2) coupled

Model Intercomparison Project, Phase 5 (CMIP5) multiple model simulations, and predictions data of meteorological elements (i.e., air temperature and precipitation) from Web services; 3) 10 years (2000–2011) of MODIS GPP/NPP datasets from Web services; and 4) 30 years (1981–2011) of AVHRR BU LAI products from Web services.

#### C. Models and Tools

The processing and analysis of multidimensional datasets need a set of models and tools, which are integrated in the middleware layer of IIS, datasets from both sensors and Web services, as well as models and tools are stored and managed in the RODB; extraction, transformation, and loading of the required information from the RODB are based on the ETL, when the needed information is extracted and transformed to the required format, OLAP (ROLAP) is used to execute operations including slicing, dicing, roll up, drill-down, and pivoting. AG, APPs, and IoT-AI are introduced in the middleware layer for detailed services and applications. Furthermore, GIS is used for temporal analysis of datasets, and e-Science platforms were used for computing and analysis in the IIS.

The results of GPP/NPP were calculated from the MODIS imagines based on the MOD17 algorithm, which is based on the original radiation use efficiency logic of Monteith (1972), which suggests that productivity of annual crops under well-watered and fertilized conditions is linearly related to the amount of absorbed solar energy specifically and the amount of absorbed photosynthetically active radiation (APAR). The translation of APAR to an actual productivity estimate is conducted via a conversion efficiency parameter  $\epsilon$ , which varies by vegetation type and climate conditions. In consequence, MOD17

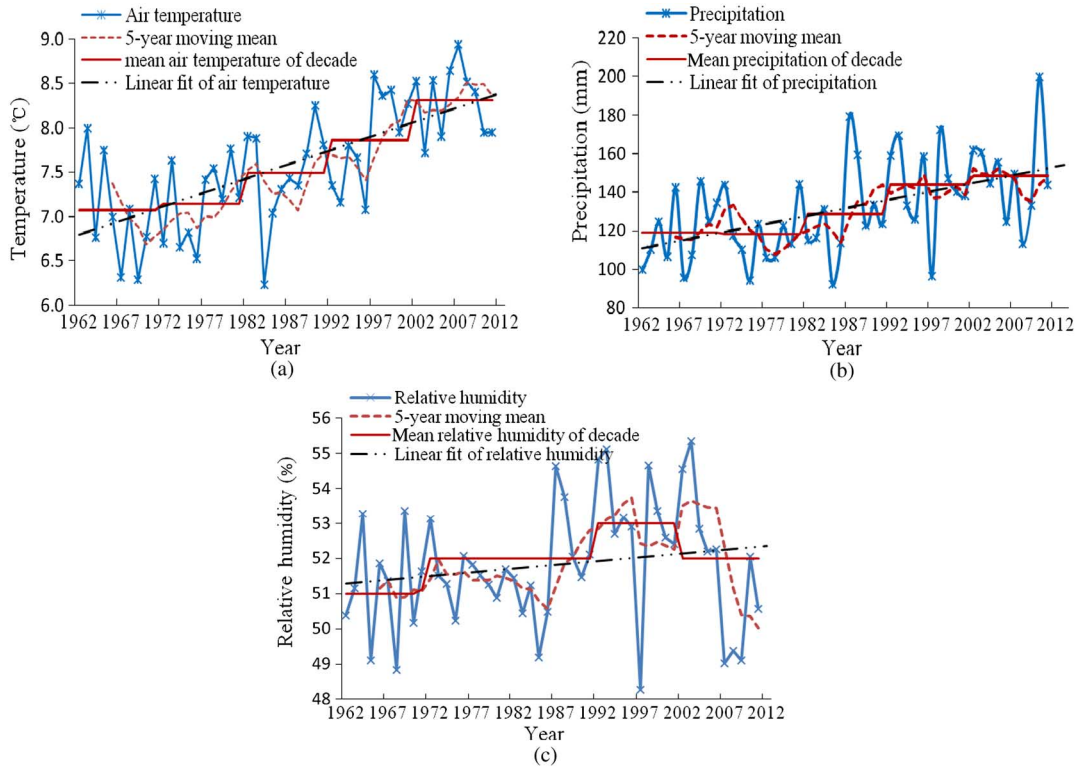


Fig. 3. Trends of meteorological elements in Xinjiang based on in situ observations from 1962 to 2011: (a) annual precipitation, (b) mean annual air temperature, and (c) mean annual relative humidity.

incorporates differences in maximum  $\varepsilon$  among vegetation types, and also lowers  $\varepsilon$  under water-stressed and/or cold temperature conditions

$$GPP = \varepsilon \times APAR \quad (1)$$

where  $\varepsilon$  is the radiation use efficiency, and absorbed photosynthetically active radiation (APAR) depends upon the geographic and seasonal variability of day length and potential incident radiation.

$$APAR = PAR \times FPAR \quad (2)$$

where PAR is the incident radiation above the canopy ( $\mu \text{ mol m}^{-2} \text{ s}^{-1}$ ) and FPAR is the fraction of incident PAR absorbed by the surface.

$$PAR = SWRad \times 0.45 \quad (3)$$

where SWRad is the incident shortwave radiation, which is provided in the dataset from NASA Data Assimilation Office (DAO).

$$FPAR = 1 - \rho_a(\theta_s) - (1 - \rho_b(\theta_s))e^{(-G_t(\theta_s)\Omega LAI / \cos \theta_s)} \quad (4)$$

where  $\theta_s$  is the solar zenith angle;  $\rho_a(\theta_s)$  and  $\rho_b(\theta_s)$  are Albedo from above and below the canopy, respectively;  $G_t(\theta_s)$  is the projection of the blades in the direction of  $\theta_s$ ; and  $\Omega$  is the foliage clumping index, a parameter determined by the spatial distribution pattern of foliage

$$\varepsilon = \varepsilon_{\max} \times TMIN\_scalar \times VPD\_scalar. \quad (5)$$

The two parameters of daily minimum air temperature ( $T_{\min}$ ) and vapor pressure deficit (VPD) are used to calculate the scalars that attenuate  $\varepsilon_{\max}$  to produce the final  $\varepsilon$  ( $\text{kg C MJ}^{-1}$ ). Values of  $T_{\min}$  and VPD are obtained from the DAO (<http://polar.gsfc.nasa.gov/index.php>) dataset, whereas the value of  $\varepsilon_{\max}$  is obtained from the Biome Parameter Look-Up Table (BPLUT), <http://www.ntsg.umd.edu/project/mod17>.

To calculate NPP, MOD17 also estimates daily leaf and fine root maintenance respiration ( $R_{lr}$ ), annual growth respiration ( $R_g$ ), and annual maintenance respiration of live cells in woody tissue ( $R_m$ )

$$PSNet = GPP - R_{lr} \quad (6)$$

$$NPP = PSNet\_Sum - R_g - R_m \quad (7)$$

$$R_{lr} = Leaf\_MR + Froot\_MR \quad (8)$$

$$Leaf\_MR = Leaf\_Mass \times leaf\_mr\_base \times Q10\_mr^{[(T_{avg}-20.0)/10.0]} \quad (9)$$

where  $leaf\_mr\_base$  is the maintenance respiration of leaves ( $\text{kg C kg C}^{-1} \text{ day}^{-1}$ ) as obtained from the BPLUT, and  $T_{avg}$  is the average daily temperature ( $^{\circ}\text{C}$ ) as estimated from the DAO meteorological data.

$$Froot\_MR = Fine\_Root\_Mass \times froot\_mr\_base \times Q10\_mr^{[(T_{avg}-20.0)/10.0]} \quad (10)$$

where  $froot\_mr\_base$  is the maintenance respiration per unit of fine roots ( $\text{kg C kg C}^{-1} \text{ day}^{-1}$ ) at  $20^{\circ}\text{C}$  as obtained from the BPLUT.



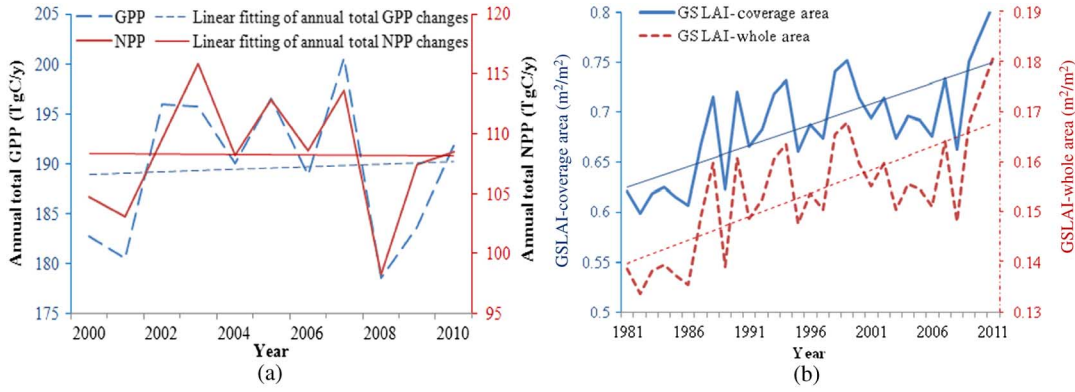


Fig. 4. Trends of GPP/NPP/LAI changes in Xinjiang: (a) annual total GPP/NPP; and (b) annual mean LAI in grow season (GS) of vegetation coverage area and whole area.

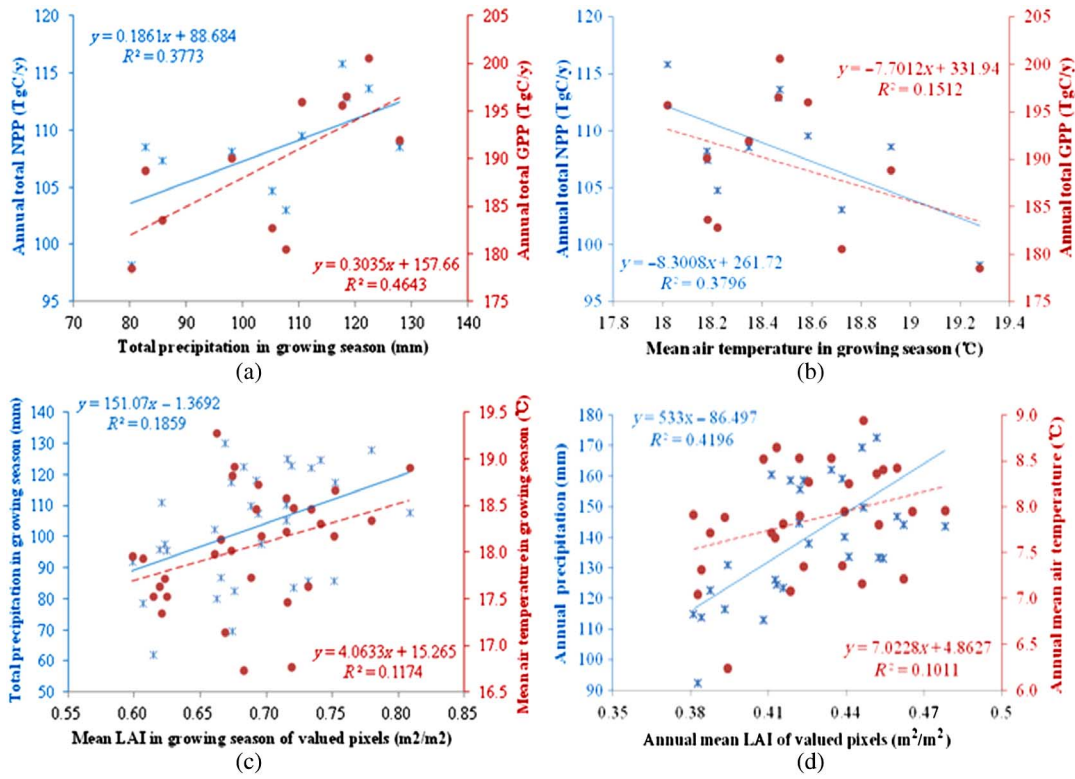


Fig. 5. Correlation between GPP/NPP/LAI and precipitation/air temperature: (a) annual total GPP/NPP versus total precipitation in growing season, (b) annual total GPP/NPP versus mean air temperature in growing season, (c) total precipitation/mean air temperature in growing season versus mean LAI in growing season of valued pixels, and (d) annual precipitation/annual mean air temperature versus annual mean LAI of valued pixels.

$$R_g = \text{Leaf\_GR} + \text{Froot\_GR} + \text{Livewood\_GR} + \text{Deadwood\_GR} \quad (11)$$

where Leaf\_GR, Froot\_GR, Livewood\_GR, and Deadwood\_GR are growth respirations ( $\text{kg C day}^{-1}$ ) of leaf, fine roots, livewood, and deadwood, respectively.

$$R_m = \text{Livewood\_Mass} \times \text{livewood\_mr\_base} \times \text{annsum\_mrindex} \quad (12)$$

where Livewood\_Mass is the mass of livewood ( $\text{kg C}$ ), livewood\_mr\_base ( $\text{kg C kg C}^{-1} \text{day}^{-1}$ ) is the maintenance respiration per unit of livewood carbon per day from the BPLUT, and annsum\_mrindex is the annual sum of the maintenance

respiration term  $Q_{10\_mr}[(T_{avg} - 20.0)/10.0]$ . More details about the algorithm could be obtained from the MOD17 User's Guide (<http://www.ntsg.umt.edu/sites/ntsg.umt.edu/files/modis/MOD17UsersGuide.pdf>).

#### D. Results

The evidences of climate change with trends of meteorological elements (i.e., annual precipitation, mean annual air temperature, and mean annual relative humidity) in Xinjiang-based on in situ observations from 1962 to 2011 are displayed in Fig. 3. The results showed the following.

- 1) There is an apparent increasing trend of air temperature in Xinjiang from 1962 to 2011; the mean annual air temperature in the last five decades is  $7.07^\circ\text{C}$  (1962–1971),  $7.15^\circ\text{C}$

(1972–1981), 7.49 °C (1982–1991), 7.87 °C (1992–2001), and 8.31 °C (2002–2011); and the mean annual air temperature has increased by 1.24 °C in the past 50 years at a rate of 0.25 °C/decade.

- 2) There is a visible increasing trend of precipitation in Xinjiang from 1962 to 2011; the mean annual precipitation in the last five decades is 119.13 mm (1962–1971), 118.03 mm (1972–1981), 128.66 mm (1982–1991), 144.01 mm (1992–2001), and 148.68 mm (2002–2011); and the annual precipitation has increased by 29.45 mm in the past 50 years at a rate of 5.89 mm/decade.
- 3) The decade trend of relative humidity in Xinjiang is stable from 1962 to 2011 and the mean annual relative humidity in the past five decades is 51% (1962–1971), 52% (1972–1981), 52% (1982–1991), 53% (1992–2001), and 52% (2002–2011).

Compared with the obvious increasing trends of precipitation and air temperature, the trend of mean annual relative humidity in the past five decades is not significant on decade scale in Xinjiang, though there are severe fluxes of the mean annual relative humidity on annual scale, especially there are intense annual changes in the last 30 years.

The annual total GPP/NPP of the terrestrial ecosystem in Xinjiang from 2000 to 2010 was calculated from the annual 1-km improved GPP/NPP results (MOD17A2/MOD17A3) derived from MODIS. The results [Fig. 4(a)] showed that the annual trends of both GPP and NPP are fluctuating in the past decade; however, the linear fit of the total annual GPP changes was slightly positive, but the NPP was slightly negative in the period. Furthermore, the mean LAI of the growing season (from May to October) from 1981 to 2011 was calculated to present the long-term ecological responses to the climate changes in Xinjiang, and the results [Fig. 4(b)] showed that there is an obvious growth trend in the past decades.

The correlations between ecological indicators (GPP, NPP, and LAI) and meteorological elements (air temperature and precipitation) were analyzed to evaluate the effects of climate change on the ecosystems in Xinjiang, and the results showed the following.

- 1) Both the annual total GPP and NPP were closely tied with the annual precipitation [Fig. 5(a)], and the GPP had a higher correlation coefficient.
- 2) There is no insignificant correlation between mean air temperature and annual GPP, but there is a negative correlation between mean air temperature and annual NPP [Fig. 5(b)].
- 3) There is no visible correlation between the meteorological factors and the mean LAI in growing-season of the valued pixels (the areas covered with vegetation) [Fig. 5(c)].
- 4) There is a remarkable correlation between the annual precipitation and the annual LAI of the valued pixels [Fig. 5(d)].

## V. CONCLUSION

This paper introduces a novel IIS for regional environmental monitoring and management based on IoT for improving the efficiency of complex tasks, the proposed IIS combines IoT,

Cloud Computing, Geoinformatics (RS, GIS, and GPS), and e-Science for environmental monitoring and management with a case study of regional climate change and its ecological responses, which is one of the most hot topics in the scientific world. The results showed that it is greatly benefited from such an IIS, not only in data collection supported by IoT but also in Web services and applications based on cloud computing and e-Science platforms, and the effectiveness of monitoring processes and decision-making can be improved obviously. The integrative system introduced in this work is valuable for the perception, transformation, processing, management, and sharing of multisource information in environmental monitoring and management, and it also provides a new paradigm for the future work, especially in the era of big data and IoT.

It is a novel attempt on the development and application of IIS based on IoT for environmental monitoring and management, but there are also several issues needed to be addressed in the future. A number of challenges limit the implementation of fully fledged IISs, such as the complexity of the IIS [15], the standardized processing and management of multisource data from multi-sensors, security and privacy challenges [69], efficient heterogeneous sensing [51], people centric sensing platforms, quality of service in cloud computing, new protocols and APPs, and so on.

In conclusion, this paper provides a prototype IIS for environmental monitoring and management with a case study on regional climate change and its ecological responses in Xinjiang, China, and the results showed that water resource availability is the decisive factor with regard to the primary production of the terrestrial ecosystem in the area. The integrated approach introduced in this work would serve as a paradigm for resource and environment management in the near future.

## ACKNOWLEDGMENTS

The authors thank all research team members for their wholehearted participation during this work, and also thank the anonymous referees and associate editors for their insightful comments and thoughtful suggestions on the manuscript.

## REFERENCES

- [1] E. Welbourne, L. Battle, G. Cole, K. Gould, K. Rector, S. Raymer *et al.*, "Building the Internet of things using RFID: The RFID ecosystem experience," *IEEE Internet Comput.*, vol. 13, no. 3, pp. 48–55, May–Jun. 2009.
- [2] N. Niu, L. Xu, and Z. Bi, "Enterprise information systems architecture-analysis and evaluation," *IEEE Trans. Ind. Informat.*, vol. 9, no. 4, pp. 2147–2154, Nov. 2013.
- [3] M. Haklay, *From Environmental Information Systems to Environmental Informatics: Evolution and Meaning*. London, U.K.: Centre for Advanced Spatial Analysis, Univ. College London, 1999.
- [4] L. Xu, Z. Li, S. Li, and F. Tang, "A decision support system for product design in concurrent engineering," *Decis. Support Syst.*, vol. 42, no. 4, pp. 2029–2042, 2007.
- [5] N. M. Avouris and B. Page, in *Environmental Informatics: Methodology and Applications of Environmental Information Processing*, B. Page, Ed. New York, NY, USA: Springer, 1995.
- [6] J. Sun, "A summary on the management of information science on natural resources," *Resour. Sci.*, vol. 9, no. 4, pp. 74–80, 1988.
- [7] J. Sun, *The Spring Up of Res-Informatics and the Regional Sustainable Development Research, in the Research Corpus of Natural Resources Explore Forty Years*. Beijing, China: Chinese Science and Technology Press, 1996.



- [8] C. Lynch, "Big data: How do your data grow?," *Nature*, vol. 455, no. 7209, pp. 28–29, 2008.
- [9] H. Reuter, U. Middelhoff, F. Graef, R. Verhoeven, T. Bätz, M. Weis, and B. Breckling, "Information system for monitoring environmental impacts of genetically modified organisms," *Environ. Sci. Pollut. Res.*, vol. 17, no. 8, pp. 1479–1490, 2010.
- [10] Y. Lin, X. Duan, C. Zhao, and L. Xu, *Systems Science: Methodological Approaches*. Boca Raton, FL, USA: CRC Press, 2012.
- [11] H. Panetto and H. J. Cecil, "Information systems for enterprise integration, interoperability and networking: Theory and applications," *Enterp. Inf. Syst.*, vol. 7, no. 1, pp. 1–6, 2013.
- [12] S. Fang, L. Xu, H. Pei, Y. Liu, Z. Liu, Y. Zhu *et al.*, "An integrated approach to snowmelt flood forecasting in water resource management," *IEEE Trans. Ind. Informat.*, vol. 10, no. 1, pp. 548–558, Apr. 2013.
- [13] R. Yuan, Z. Li, X. Guan, and L. Xu, "An SVM-based machine learning method for accurate Internet traffic classification," *Inf. Syst. Front.*, vol. 12, no. 2, pp. 149–156, 2010.
- [14] N. P. Melville, "Information systems innovation for environmental sustainability," *MIS Quart.*, vol. 34, no. 1, pp. 1–21, 2010.
- [15] L. Xu, "Enterprise systems: State-of-the-art and future trends," *IEEE Trans. Ind. Informat.*, vol. 7, no. 4, pp. 630–640, Nov. 2011.
- [16] H. Hassan, J. Martínez-Rubio, A. Perles, J. Capella, C. Dominguez, and J. Albaladejo, "Smartphone-based industrial informatics projects and laboratories," *IEEE Trans. Ind. Informat.*, vol. 9, no. 1, pp. 557–566, Feb. 2013.
- [17] J. Ulmer, J. Belaud, and J. Le Lann, "A pivotal-based approach for enterprise business process and IS integration," *Enterp. Inf. Syst.*, vol. 7, no. 1, pp. 61–78, 2013.
- [18] X. Gao, L. Xu, X. Wang, Y. Li, M. Yang, and Y. Liu, "Workflow process modelling and resource allocation based on polychromatic sets theory," *Enterp. Inf. Syst.*, vol. 7, no. 2, pp. 198–226, 2013.
- [19] L. Duan and L. Xu, "Business intelligence for enterprise systems: A survey," *IEEE Trans. Ind. Informat.*, vol. 8, no. 3, pp. 679–687, Aug. 2012.
- [20] L. Xu, "Information architecture for supply chain quality management," *Int. J. Prod. Res.*, vol. 49, no. 1, pp. 183–198, 2011.
- [21] X. Gao, L. Xu, X. Wang, Y. Li, M. Yang, and Y. Liu, "Workflow process modelling and resource allocation based on polychromatic sets theory," *Enterp. Inf. Syst.*, vol. 7, no. 2, pp. 198–226, 2013.
- [22] L. Xu, N. Liang, and G. Qiong, "An integrated approach for agricultural ecosystem management," *IEEE Trans. Syst. Man Cybern. C, Appl. Rev.*, vol. 38, no. 4, pp. 590–599, Jul. 2008.
- [23] L. Li, L. Xu, H. A. Jeng, D. Naik, T. Allen, and M. Frontini, "Creation of environmental health information system for public health service: A pilot study," *Inf. Syst. Front.*, vol. 10, no. 5, pp. 531–542, 2008.
- [24] S. Li, L. Xu, and X. Wang, "A continuous biomedical signal acquisition system based on compressed sensing in body sensor networks," *IEEE Trans. Ind. Informat.*, vol. 9, no. 3, pp. 1764–1771, Aug. 2013.
- [25] E. Xu, M. Wermus, and D. B. Bauman, "Development of an integrated medical supply information system," *Enterp. Inf. Syst.*, vol. 5, no. 3, pp. 385–399, 2011.
- [26] L. Xu, C. Wang, X. Luo, and Z. Shi, "Integrating knowledge management and ERP in enterprise information systems," *Syst. Res. Behav. Sci.*, vol. 23, no. 2, pp. 147–156, 2006.
- [27] L. Xu, C. Wang, Z. Bi, and J. Yu, "AutoAssem: An automated assembly planning system for complex products," *IEEE Trans. Ind. Informat.*, vol. 8, no. 3, pp. 669–678, Aug. 2012.
- [28] L. D. Xu, C. Wang, Z. Bi, and J. Yu, "Object-oriented templates for automated assembly planning of complex products," *IEEE Trans. Autom. Sci. Eng.*, to be published, doi: 10.1109/TASE.2012.2232652.
- [29] J. Yu, L. D. Xu, Z. Bi, and C. Wang, "Extended interference matrices for exploded view of assembly planning," *IEEE Trans. Autom. Sci. Eng.*, vol. 11, no. 1, pp. 279–286, Jan. 2014.
- [30] W. Viriyasitavat, L. Xu, and A. Martin, "SWSpec: The requirements specification language in service workflow environments," *IEEE Trans. Ind. Informat.*, vol. 8, no. 3, pp. 631–638, Aug. 2012.
- [31] L. Xu, W. Viriyasitavat, P. Ruchikachorn, and A. Martin, "Using propositional logic for requirements verification of service workflow," *IEEE Trans. Ind. Informat.*, vol. 8, no. 3, pp. 639–646, Aug. 2012.
- [32] G. Monakova and F. Leymann, "Workflow art: A framework for multidimensional workflow analysis," *Enterp. Inf. Syst.*, vol. 7, no. 1, pp. 133–166, 2013.
- [33] W. Tan, W. Xu, F. Yang, L. Xu, and C. Jiang, "A framework for service enterprise workflow simulation with multi-agents cooperation," *Enterp. Inf. Syst.*, vol. 7, no. 4, pp. 523–542, 2013.
- [34] Y. Yin, J. Xie, L. Xu, and H. Chen, "Imaginal thinking-based human-machine design methodology for the configuration of reconfigurable machine tools," *IEEE Trans. Ind. Informat.*, vol. 8, no. 3, pp. 659–668, Aug. 2012.
- [35] F. Tao, Y. LaiLi, L. Xu, and L. Zhang, "FC-PACO-RM: A parallel method for service composition optimal-selection in cloud manufacturing system," *IEEE Trans. Ind. Informat.*, vol. 9, no. 4, pp. 2023–2033, Nov. 2013.
- [36] D. Giusto, A. Iera, G. Morabito, and L. Atzori, Eds. *The Internet of Things*. New York, NY, USA: Springer, 2010.
- [37] K. Ashton, "That 'Internet of Things' thing," *IEEE RFiD J.*, vol. 22, pp. 97–114, 2009.
- [38] H. Chaouchi, Ed. *The Internet of Things: Connecting Objects*. Hoboken, NJ, USA: Wiley-ISTE, 2010.
- [39] L. Atzori, A. Iera, and G. Morabito, "The Internet of things: A survey," *Comput. Netw.*, vol. 54, no. 15, pp. 2787–2805, 2010.
- [40] M. Chui, M. Löffler, and R. Roberts, "The Internet of things," *McKinsey Quart.*, vol. 2, pp. 1–9, 2010.
- [41] S. Li, L. Xu, and X. Wang, "Compressed sensing signal and data acquisition in wireless sensor networks and Internet of Things," *IEEE Trans. Ind. Informat.*, vol. 9, no. 4, pp. 2177–2186, Nov. 2013.
- [42] S. Haller, S. Karnouskos, and C. Schroth, "The Internet of Things in an Enterprise Context," in *Future Internet-FIS 2008*, J. Domingue, D. Fensel, and P. Traverso, Eds. Berlin, Germany: Springer-Verlag, 2009, pp. 14–28.
- [43] G. Kortuem, F. Kawsar, D. Fitton, and V. Sundramoorthy, "Smart objects as building blocks for the Internet of things," *IEEE Internet Comput.*, vol. 14, no. 1, pp. 44–51, Jan./Feb. 2010.
- [44] L. Wang, L. Xu, Z. Bi, and Y. Xu, "Data filtering for RFID and WSN integration," *IEEE Trans. Ind. Informat.*, vol. 10, no. 1, pp. 408–418, Mar. 2013.
- [45] W. T. Sung and M. H. Tsai, "Data fusion of multi-sensor for IOT precise measurement based on improved PSO algorithms," *Comput. Math. Appl.*, vol. 64, no. 5, pp. 1450–1461, 2012.
- [46] M. Paschou, E. Sakkopoulos, E. Sourla, and A. Tsakalidis, "Health Internet of Things: Metrics and methods for efficient data transfer," *Simul. Model. Pract. Theory*, vol. 34, pp. 186–199, 2013.
- [47] W. He and L. Xu, "Integration of distributed enterprise applications: A survey," *IEEE Trans. Ind. Informat.*, vol. 10, no. 1, pp. 35–42, Feb. 2014.
- [48] C. H. Liu, B. Yang, and T. Liu, "Efficient naming, addressing and profile services in Internet-of-Things sensory environments," *Ad Hoc Netw.*, to be published, doi: 10.1016/j.adhoc.2013.02.008.
- [49] L. A. Amaral, F. P. Hessel, E. A. Bezerra, J. C. Corrêa, O. B. Longhi, and T. F. Dias, "eCloudRFID-A mobile software framework architecture for pervasive RFID-based applications," *J. Netw. Comput. Appl.*, vol. 34, no. 3, pp. 972–979, 2011.
- [50] W. He, G. Yan, and L. Xu, "Developing vehicular data cloud services in the IoT environment," *IEEE Trans. Ind. Informat.*, vol. 10, no. 2, pp. 1587–1595, 2014.
- [51] D. Miorandi, S. Sicari, F. De Pellegrini, and I. Chlamtac, "Internet of things: Vision, applications and research challenges," *Ad Hoc Netw.*, vol. 10, no. 7, pp. 1497–1516, 2012.
- [52] S. Fang, L. Xu, Y. Zhu, Y. Liu, Z. Liu, H. Pei, Y. Yan, and H. Zhang, "An integrated information system for snowmelt flood early-warning based on Internet of Things," *Inf. Syst. Front.*, to be published, doi: 10.1007/s10796-013-9466-1.
- [53] M. C. Domingo, "An overview of the Internet of Things for people with disabilities," *J. Netw. Comput. Appl.*, vol. 35, no. 2, pp. 584–596, 2012.
- [54] M. C. Domingo, "An overview of the Internet of underwater things," *J. Netw. Comput. Appl.*, vol. 35, pp. 1879–1890, 2012.
- [55] X. Shuai and H. Qian, "Design of wetland monitoring system based on the Internet of Things," *Procedia Environ. Sci.*, vol. 10, pp. 1046–1051, 2011.
- [56] N. Li, M. Sun, Z. Bi, Z. Su, and C. Wang, "A new methodology to support group decision-making for IoT-based emergency response systems," *Inf. Syst. Front.*, to be published, doi: 10.1007/s10796-013-9407-z.
- [57] Z. Pang, Q. Chen, W. Han, and L. Zheng, "Value-centric design of the Internet-of-things solution for food supply chain: Value creation, sensor portfolio and information fusion," *Inf. Syst. Front.*, to be published, doi: 10.1007/s10796-012-9374-9.
- [58] C. Du and S. Zhu, "Research on urban public safety emergency management early warning system based on technologies for the Internet of things," *Procedia Eng.*, vol. 45, pp. 748–754, 2012.
- [59] Z. Pang, "Technologies and architectures of the Internet-of-Things (IoT) for health and well-being," Ph.D. dissertation, Dept. Electron. Syst., School Inform. Commun. Technol. KTH-sRoyal Inst. Techn., Stockholm, Sweden, 2013.
- [60] Z. Pang, L. Zheng, J. Tian, S. Kao-Walter, E. Dubrova, and Q. Chen, "Design of a terminal solution for integration of in-home health care devices and services towards the Internet-of-Things," *Enterp. Inf. Syst.*, to be published, doi: 10.1080/17517575.2013.776118.
- [61] E. Sun, X. Zhang, and Z. Li, "The Internet of Things (IOT) and cloud computing (CC) based tailings dam monitoring and pre-alarm system in mines," *Safety Sci.*, vol. 50, no. 4, pp. 811–815, 2012.

- [62] J. Zhao, X. Zheng, R. Dong, and G. Shao, "The planning, construction, and management toward sustainable cities in China needs the environmental Internet of Things," *Int. J. Sustain. Dev. World Ecol.*, vol. 20, no. 3, pp. 195–198, 2013.
- [63] C. Wang, Z. Bi, and L. D. Xu, "IoT and cloud computing in automation of assembly modeling systems," *IEEE Trans. Ind. Informat.*, vol. 10, no. 2, pp. 1426–1434, 2014.
- [64] L. Zhang, Y. Luo, F. Tao, B. Li, L. Ren, X. Zhang, H. Guo, Y. Cheng, A. Hu, and Y. Liu, "Cloud manufacturing: A new manufacturing paradigm," *Enterp. Inf. Syst.*, vol. 8, no. 2, pp. 167–187, Mar. 2014.
- [65] G. Wu, S. Talwar, K. Johnsson, N. Himayat, and K. D. Johnson, "M2M: From mobile to embedded Internet," *IEEE Commun. Mag.*, vol. 49, no. 4, pp. 36–43, Apr. 2011.
- [66] T. Taleb and A. Kunz, "Machine type communications in 3GPP networks: Potential, challenges, and solutions," *IEEE Commun. Mag.*, vol. 50, no. 3, pp. 178–184, Mar. 2012.
- [67] S. Fang, J. Yan, M. Che, Y. Zhu, Z. Liu, H. Pei, H. Zhang, G. Xu, and X. Lin, "Climate change and the ecological responses in Xinjiang, China: Model simulations and data analyses," *Quaternary Int.*, vol. 311, pp. 108–116, Oct. 2013.
- [68] S. Fang, H. Pei, Z. Liu, K. Beven, and Z. Wei, "Water resources assessment and regional virtual water potential in the Turpan Basin, China," *Water Resour. Manage.*, vol. 24, no. 13, pp. 3321–3332, 2010.
- [69] C. Fan, S. Huang, and Y. Lai, "Privacy-enhanced data aggregation scheme against internal attackers in smart grid," *IEEE Trans. Ind. Informat.*, vol. 10, no. 1, pp. 666–675, Feb. 2014.



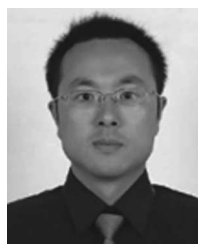
**Jiaerheng Ahati** received the Bachelor's degree in analytical chemistry from Xinjiang University, Xinjiang, China, in 1984.

He is currently the Present of the Xinjiang Academy of Environmental Protection Science, the Vice President of the Xinjiang Ecological Society, and a Member of the Seventh Council of the Chinese Society for Environmental Sciences. His scientific interests include environmental chemistry, environmental monitoring, and industrial pollution control.



**Huan Pei** received the M.S. degree in physical geography from Xinjiang University, Xinjiang, China, in 2006, and the Ph.D. degree in geographical information systems from Nanjing University, Nanjing, China, in 2009.

She is currently a Lecturer at Yanshan University, Hebei, China. Her scientific interests include remote sensing and its application in resources and environment.



**Shifeng Fang** received the M.S. and the Ph.D. degrees in physical geography from Xinjiang University, Xinjiang, China, in 2007 and 2010, respectively.

He has been working on a number of projects involving the hydro system and climate change, and water resources management. His scientific interests include integrated water resources management, land surface model simulation, and climate change and its related impacts on hydro systems.



**Jianwu Yan** received the M.S. degree in pratical science from Lanzhou University, Lanzhou, China, in 2008, and he is currently working towards the Ph.D. degree at the University of the Chinese Academy of Sciences, Institute of Geographic Sciences and Natural Resources Research, Chinese Academy of Sciences, Beijing, China.

His major research interests include the estimation for land surface energy exchange under land cover change and climate change based on land surface model simulation.



**Li Da Xu** (M'86–SM'11) received the M.S. degree in information science and engineering from the University of Science and Technology of China, Hefei, China, in 1981, and the Ph.D. degree in systems science and engineering from Portland State University, Portland, OR, USA, in 1986.

Dr. Xu serves as the Founding Chair of the Technical Committee 8 Working Group 8.9, Working Group on Enterprise Information Systems of the International Federation for Information Processing (IFIP TC8 WG8.9) and the Founding Chair of the

IEEE SMC Society Technical Committee on Enterprise Information Systems.



**Zhihui Liu** received the M.S. degree in hydrology and water resources engineering from Hohai University, Nanjing, China, in 1993, and the Ph.D. degree in cartography and geographic information engineering from the China University of Mining and Technology, Xuzhou, China, in 2009. He is a Professor and the Director with the Institute of Arid Ecology and Environment, Xinjiang University, Urumqi, China. His research interests include hydrology, water resources management, eco-environment in oases, ecological and environmental planning, and decision

support system.



**Yunqiang Zhu** received the Ph.D. degree in geographical information systems from the University of the Chinese Academy of Sciences, Beijing, China, in 2006.

He is currently an Associate Professor at the Institute of Geographic Sciences and Natural Resources Research, Chinese Academy of Sciences. His scientific interests include e-Geoscience, and GIS and its application in resources and environment.